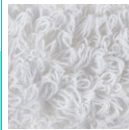




Polyester Wet System flat mop

Polyester flat mop, looped end internal and cut end external, polyester support



Technical information

code	notes	cm (comm. sizes)	cm (real sizes)	C	pcs	kg	m ³
0000547		↕ 40 ↕ 14	↕ 44 ↕ 14,5	<input type="checkbox"/>	25	4,43	0,027
0000542		↕ 50 ↕ 16	↕ 52,5 ↕ 17	<input type="checkbox"/>	25	5,3	0,036

SYSTEM

Flat mop system with flaps, to be used with roll, jaw or flat wringer
Ideal for greasy and residual dirt thanks to the polyester absorption power of greasy dirt and the yarn structure

Advantages

- **Time-saving:** thanks to the large cleaning surface and the possibility of reaching corners and cleaning under furniture
- **Ergonomic:** lightweight, it reduces operator's strain

Material

Yarn: 70% polyester, 30% cotton - Support: polyester



Washing conditions

Guidelines for proper fibre maintenance

Follow the washing instructions (temperatures and dosage) on the laundry detergent packaging
Perform a pre-wash in cold water without laundry detergent to remove any residual product used during cleaning operations

Recommended use of professional textile laundry detergent

Do not use fabric softener

Do not use laundry detergents with Ph > 11

The use of laundry nets is recommended to speed up and make laundry operations more hygienic

Specific mop instructions



Washing temperature max 90° C, recommended 60°

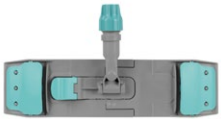


Bleaching possible, do not use chlorine



Do not tumble dry or in a dryer

Related products



Wet System Light frame



Telescopic handle



Action Pro Dry



Dry wringer

Product options



Wet System Tris flat mop